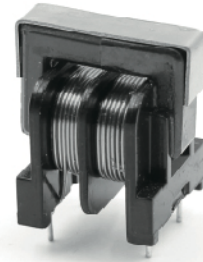
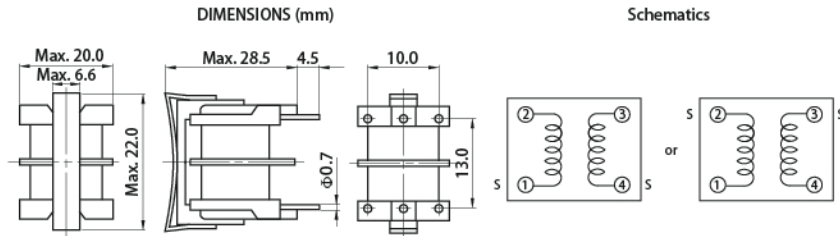




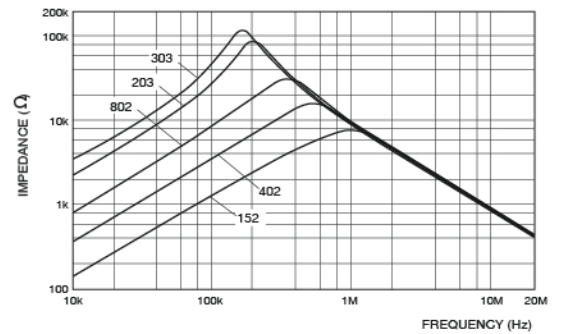
# UU16 EMI FILTER

## FWCMUU16V SERIES



Ferriwo Part No.	Inductance (1-2) (4-3) @1kHz	Inductance Balance	D.C.R. (1-2) (4-3) @20°C	Rated Current (50/60Hz)
FWCMUU16V152N	Min. 1.5mH	Max. 40 $\mu$ H	Max. 125m $\Omega$	1.9Arms
FWCMUU16V402N	Min. 4.0mH	Max. 60 $\mu$ H	Max. 270m $\Omega$	1.2Arms
FWCMUU16V802N	Min. 8.0mH	Max. 80 $\mu$ H	Max. 460m $\Omega$	900mArms
FWCMUU16V203N	Min. 20mH	Max. 150 $\mu$ H	Max. 1.6 $\Omega$	500mArms
FWCMUU16V303N	Min. 30mH	Max. 200 $\mu$ H	Max. 2.5 $\Omega$	400mArms

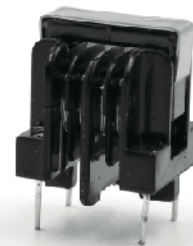
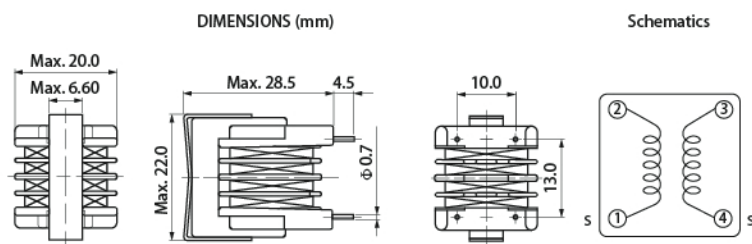
### Impedance Characteristics



**Application**  
VCR, TV.

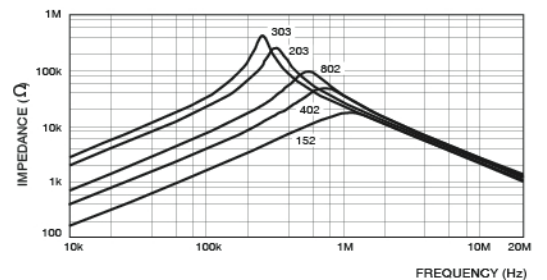
**Features**  
AC common mode choke coil which has excellent attenuation characteristics in low frequency band.

## FWCMUU16BV SERIES



Ferriwo Part No.	Inductance (1-2) (4-3) @1kHz	Inductance Balance	D.C.R. (1-2) (4-3) @20°C	Rated Current (50/60Hz)
FWCMUU16BV152N	Min. 1.5mH	Max. 40 $\mu$ H	Max. 200m $\Omega$	1.75Arms
FWCMUU16BV402N	Min. 4.0mH	Max. 60 $\mu$ H	Max. 350m $\Omega$	1.00Arms
FWCMUU16BV802N	Min. 8.0mH	Max. 80 $\mu$ H	Max. 600m $\Omega$	800mArms
FWCMUU16BV203N	Min. 20.0mH	Max. 200 $\mu$ H	Max. 1.50 $\Omega$	450mArms
FWCMUU16BV303N	Min. 30.0mH	Max. 300 $\mu$ H	Max. 2.50 $\Omega$	350mArms

### Impedance Characteristics



### Application

Common mode noise filter for TV, VCR, Switching power supply, NC machine, PC & PC related device, measurement equipment and control unit.

### Features

Same dimension of UU16H/V and impedance characteristic in high frequency range is improved by split bobbin.