

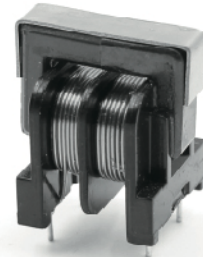
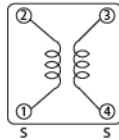
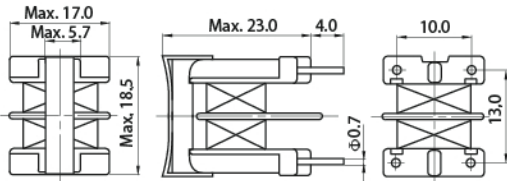


UU10.5 EMI FILTER

FWCMUU10H/V SERIES

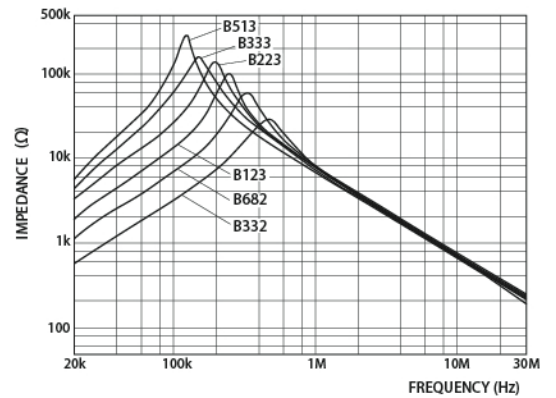
DIMENSIONS (mm)

Schematics



Ferriwo Part No.	Inductance (1-2) (4-3) @1kHz	Inductance Balance	D.C.R. (1-2) (4-3) @20°C	Rated Current (50/60Hz)
FWCMUU10H/V332N	Min. 3.3mH	Max. 100 μ H	Max. 710m Ω	650mA Arms
FWCMUU10H/V682N	Min. 6.8mH	Max. 200 μ H	Max. 1.26 Ω	430mA Arms
FWCMUU10H/V123N	Min. 12.0mH	Max. 360 μ H	Max. 2.20 Ω	340mA Arms
FWCMUU10H/V223N	Min. 22.0mH	Max. 440 μ H	Max. 3.64 Ω	250mA Arms
FWCMUU10H/V333N	Min. 33.0mH	Max. 660 μ H	Max. 5.74 Ω	200mA Arms
FWCMUU10H/V513N	Min. 51.0mH	Max. 1mH	Max. 9.12 Ω	150mA Arms

Impedance Characteristics



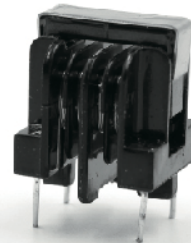
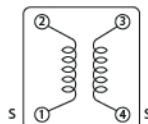
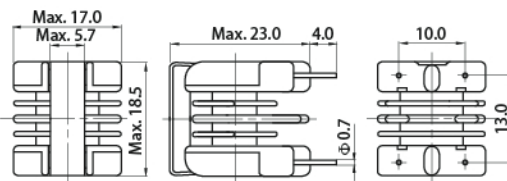
Application
VCR, TV.

Features
Small size and inexpensive type.

FWCMUU10BV SERIES

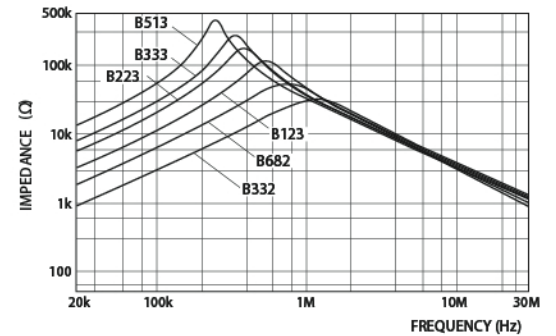
DIMENSIONS (mm)

Schematics



Ferriwo Part No.	Inductance (1-2) (4-3) @1kHz	Inductance Balance	D.C.R. (1-2) (4-3) @20°C	Rated Current (50/60Hz)
FWCMUU10BV332N	Min. 3.3mH	Max. 100 μ H	Max. 729m Ω	650mA Arms
FWCMUU10BV682N	Min. 6.8mH	Max. 200 μ H	Max. 1.31 Ω	430mA Arms
FWCMUU10BV123N	Min. 12.0mH	Max. 360 μ H	Max. 2.23 Ω	340mA Arms
FWCMUU10BV223N	Min. 22.0mH	Max. 440 μ H	Max. 3.87 Ω	250mA Arms
FWCMUU10BV333N	Min. 33.0mH	Max. 660 μ H	Max. 5.82 Ω	200mA Arms
FWCMUU10BV513N	Min. 51.0mH	Max. 1mH	Max. 9.51 Ω	150mA Arms

Impedance Characteristics



Application

Common mode noise filter for TV, VCR, Switching power supply, NC machine, PC & PC related device, measurement equipment and control unit.

Features

Same dimension of UU10H/V and impedance characteristic in high frequency range is improved by split bobbin.