

30W High Efficiency Dimmable Driver

Features

- For LED Indoor Office & Retail Application
- 1-10V / PWM Dimming Function
- High Reliability & Long Life 50,000hrs
- Compact Size/ Optimized Performance
- Constant Current Design/ Low Inrush Current/ Low Ripple Current
- Wide Input Range for Worldwide use (up to 277Vac)
- Low energy consumption at standby
- Protections: Short Circuit / Over Voltage / Over temperature
- Class 2 power unit
- 100% Burn-in Test
- Safety: Meet IEC61347-2-13, UL8750 & EMI EN55015



M Type: With 1-10V, PWM Dimming Function
Blank Type: Without Dimming Function



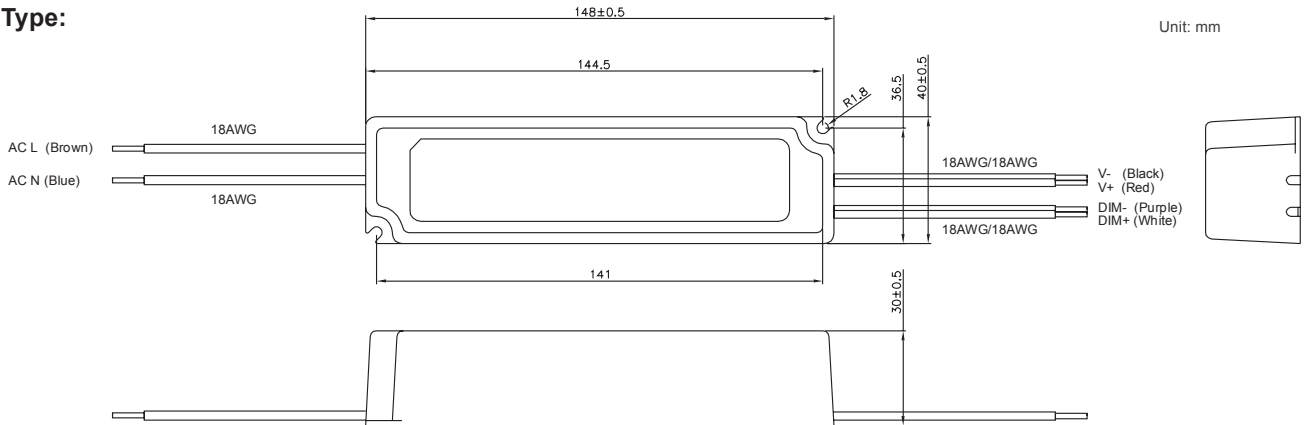
SPECIFICATIONS

Model Name	FSP030IWCS050P(50)	FSP030IWCS050P(60)	FSP030IWCS048P(70)	FSP030IWCS032P(Z5)	FSP030IWCS026P(A2)
Rated Power	33W	33W	33W	33W	33W
Output Voltage	24-50V	24-50V	24-48V	14-32V	12-26V
Rated Current	500mA	600mA	700mA	1050mA	1250mA
Efficiency (typ.)	85%	86%	88%	88%	88%
Input Voltage/ Frequency	90~264Vac / 47~63Hz				
Power Factor (typ.)	PF≥0.9				
Turn On Delay Time,Rise time	≤0.5s max / ≤50ms max.				
Inrush Current (typ.)	5A cold start				
Life Time [2]	50,000 hours				
Operating Temperature	-20°C~+45°C				
Output Current Accuracy	±5%	±5%	±5%	±5%	±5%
Output Ripple Current[3]	±5%	±5%	±5%	±5%	±5%
Line Regulation	±0.5%	±0.5%	±0.5%	±0.5%	±0.5%
AC Current (typ.)	<0.37A				
Leakage Current	≤0.25mA				
Operating Humidity	20 ~ 95%RH				
Storage Temperature	-40 ~ +85°C				
Storage Humidity	10 ~ 95%RH				
Vibration	0.01g ² / Hz at 5 Hz sloping to 0.02g ² / Hz at 20 Hz, and maintaining 0.02g ² / Hz from 20 Hz to 500 Hz at a constant acceleration of 3.13G for 20 minutes per axis for all three axes				
IP Level	IP20				
Over Voltage Protection	<60V	<60V	<60V	<60V	<60V
	Auto Recovery				
Other Protections	SCP ; OTP ; OLP				
Surge Voltage	Differential Mode ≥ 1KV ; Common Mode ≥ 2KV				
Withstand Voltage (Hipot)	I/P-O/P 3750Vac, I/P-FG 1875Vac				
Isolation Resistance	I/P-O/P I/P-FG: 100M ohm @ 500Vdc / 25°C				
Safety Standards	EN61347-1, EN61347-2-13, UL8750				
EMC Standard	Compliant with EN55015 CLASS B				
Dimension (LxWxH)	148 x 40 x 30mm				
Net Weight / Packing	165g ; 36 pcs / box				

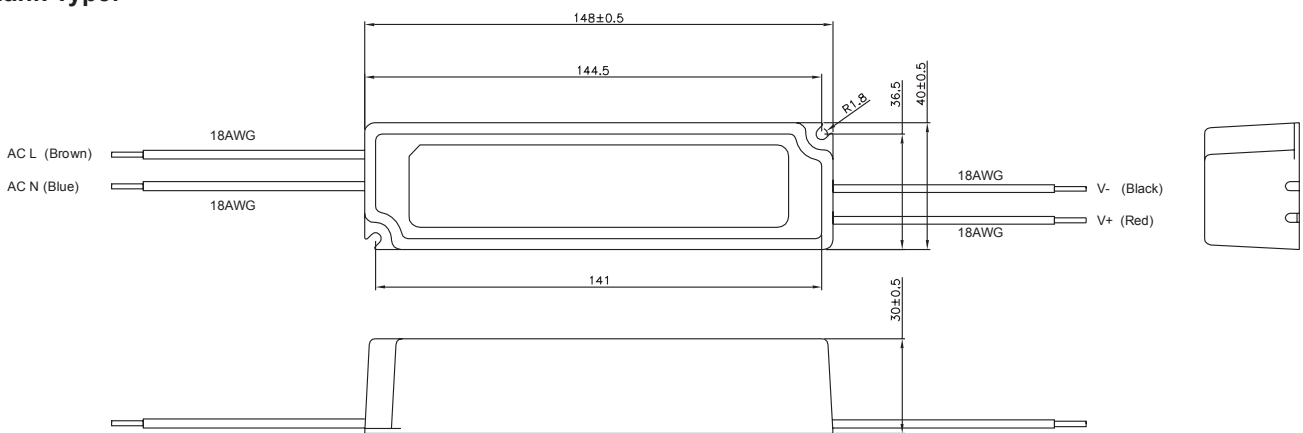
Notes:

1. Data that didn't mention is tested under 230Vac/ 50Hz full load condition
2. Data at full load and rated voltage, 230Vac / 50Hz input, and 35°C ambient temperature unless otherwise specified.
3. The ripple current must be measured under the condition of AC coupling & 20MHz bandwidth. (Rated input and rated output)
4. The power supply is considered as a component that will be operated in combination with final equipment. Since EMC performance will be affected by the complete installation, the final equipment manufacturers must re-qualify EMC Directive on the complete installation again.

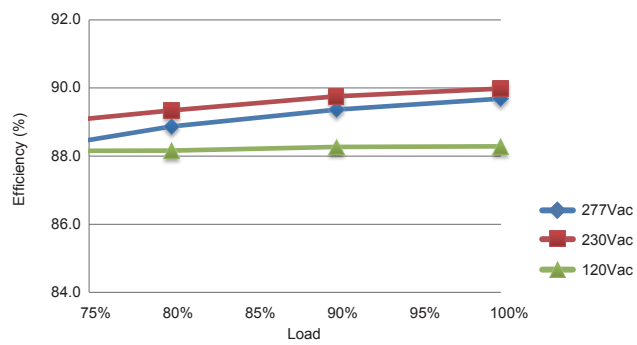
M Type:



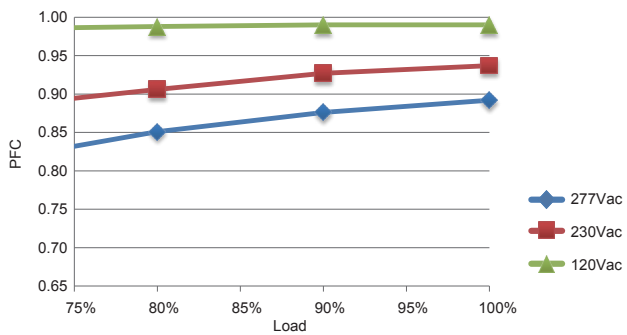
Blank Type:



Efficiency



PFC vs Loading



THD vs Input Voltage

